

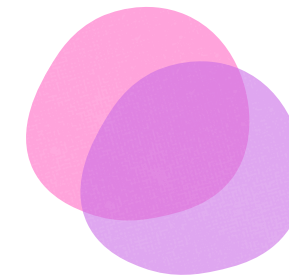


LITHOPHANES

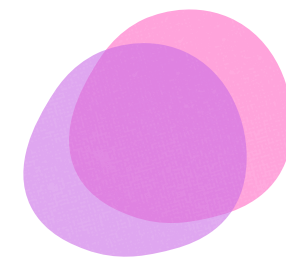
welcome!



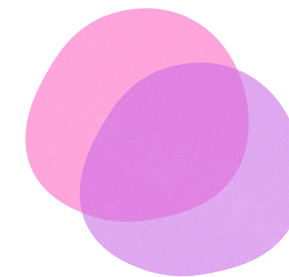
MAIN POINTS



Upload



Edit



Model

What is a lithophane?

“ A lithophane is an etched or molded artwork in very thin translucent porcelain or plastic that can be seen clearly only when back lit with a light source. ”





YOUR PICTURE DETERMINES IT ALL

Pictures work best with black and white photos so you can completely see the difference between the light and dark.



<https://itslitho.com/>

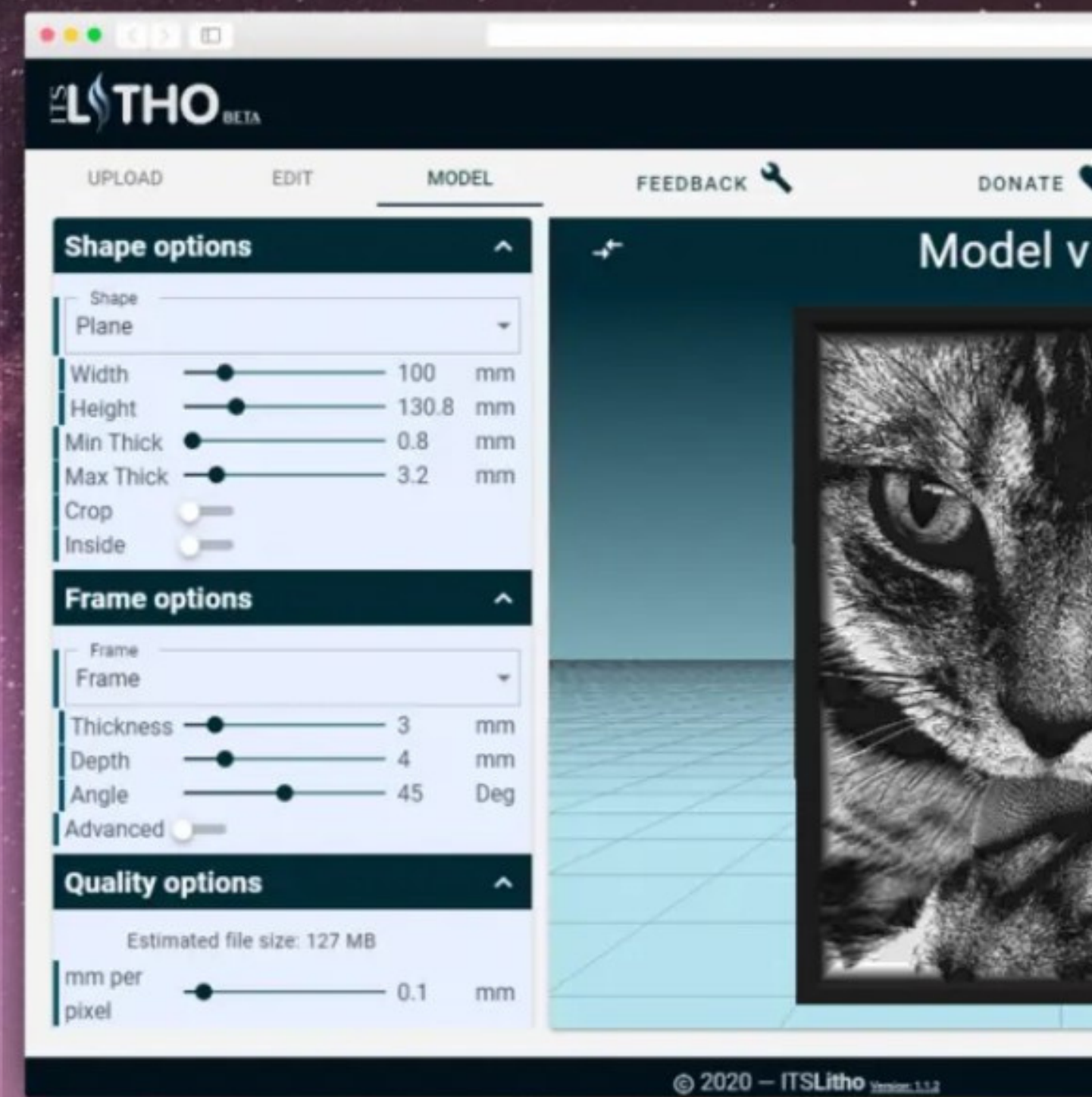


Convert your images into 3D model lithophanes

Free online designing software that helps you create high-quality 3D printed lithophanes. It's a simple yet powerful cross-platform lithophane maker.

GET STARTED

LEARN MORE



Shape

Shape Plane

Width

Height 60

Min Thick 0.8

Max Thick 3.2

Crop

Inside

Frame options

Frame

Thickness 3 mm

Depth 4 mm

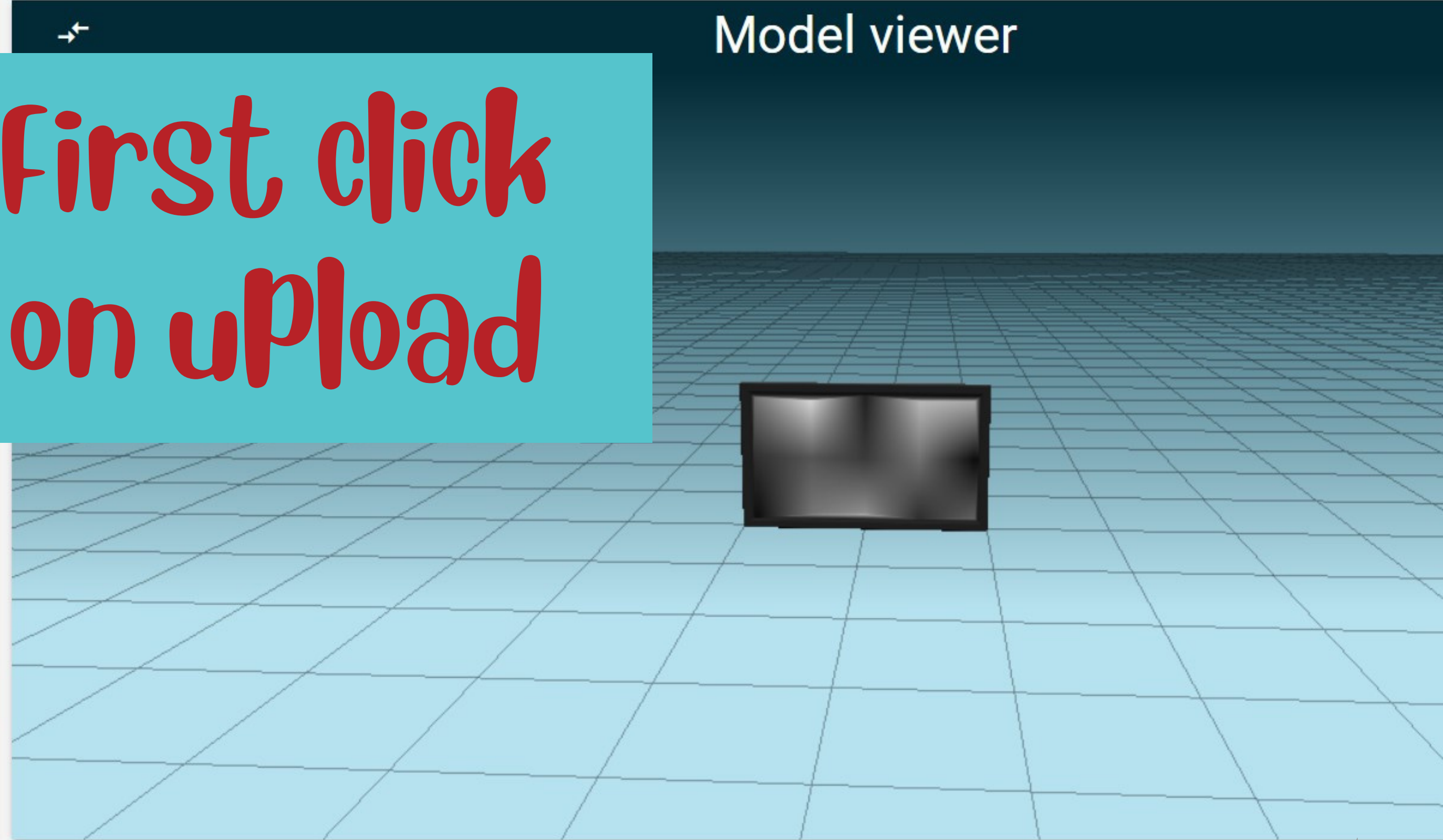
Angle 45 Deg

Advanced

Quality options

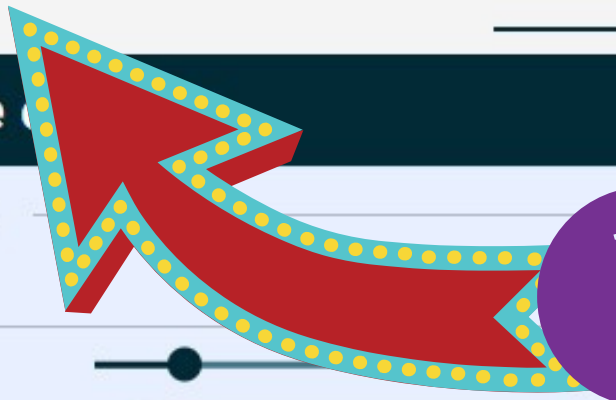
Estimated file size: 6 MB

mm per nivel 0.1 mm



1

first click on upload



UPLOAD

EDIT

MODEL

Upload Image

UPLOAD

Add Image

DELETE

2



ADD IMAGE

UPLOAD

EDIT

MODEL

Upload Image

3

Edit



UPLOAD


Add Image


DELETE


399-3997969


DELETE

Grey scaling

Grey-scaling method
 Luminance 

Red  0.3

Green  0.6

Blue  0.1

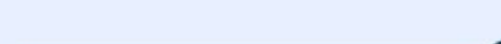



Bg intensity  1

Image editor

Brightness  0

Contrast  0

Exposure  0






Blur  0 px


Image transformations

Rotate  0 Deg

Crop width  0 100 %

Crop height  0 100 %

Mirror 

Flip 

4

Edit is where you change up your picture to make things brighter, darker, crop, and rotate!

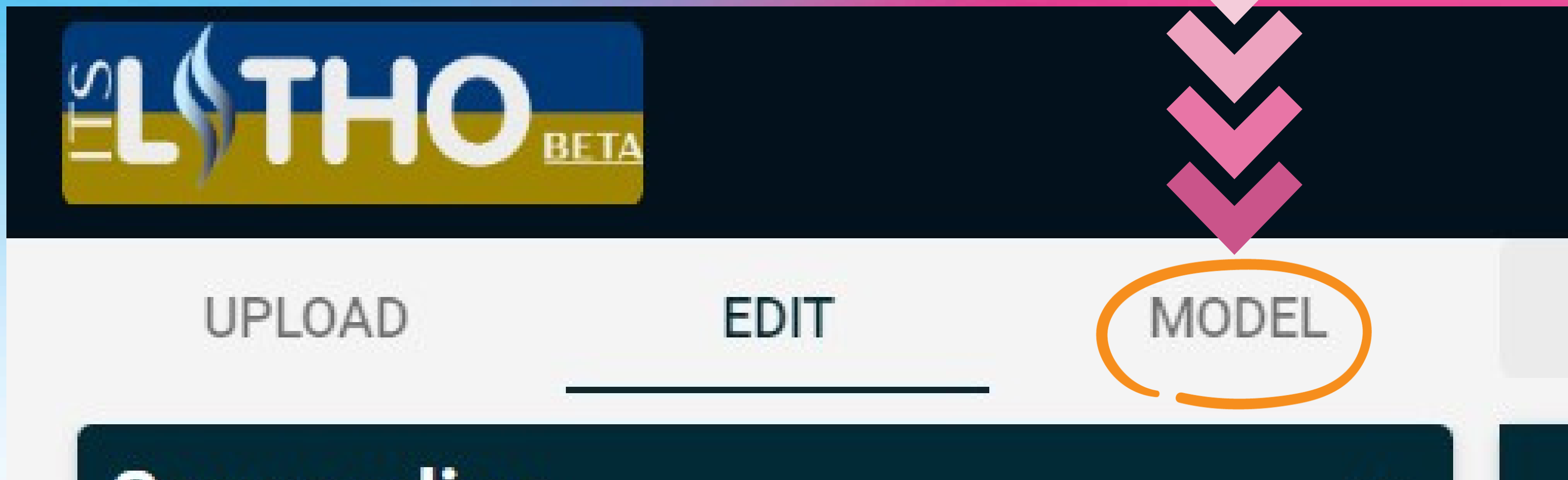
Image viewer



5

WHEN YOU ARE FINISHED EDITING

CLICK ON MODEL!



[UPLOAD](#)[EDIT](#)[MODEL](#)[FEEDBACK/BUG](#) [DONATE](#)

Enable
lamp
Nightlight

Model options

Lighting
Back lighted

Light color

Light intensity 5 95 %

Material color

Auto update

Image options

Positive image

Flip image

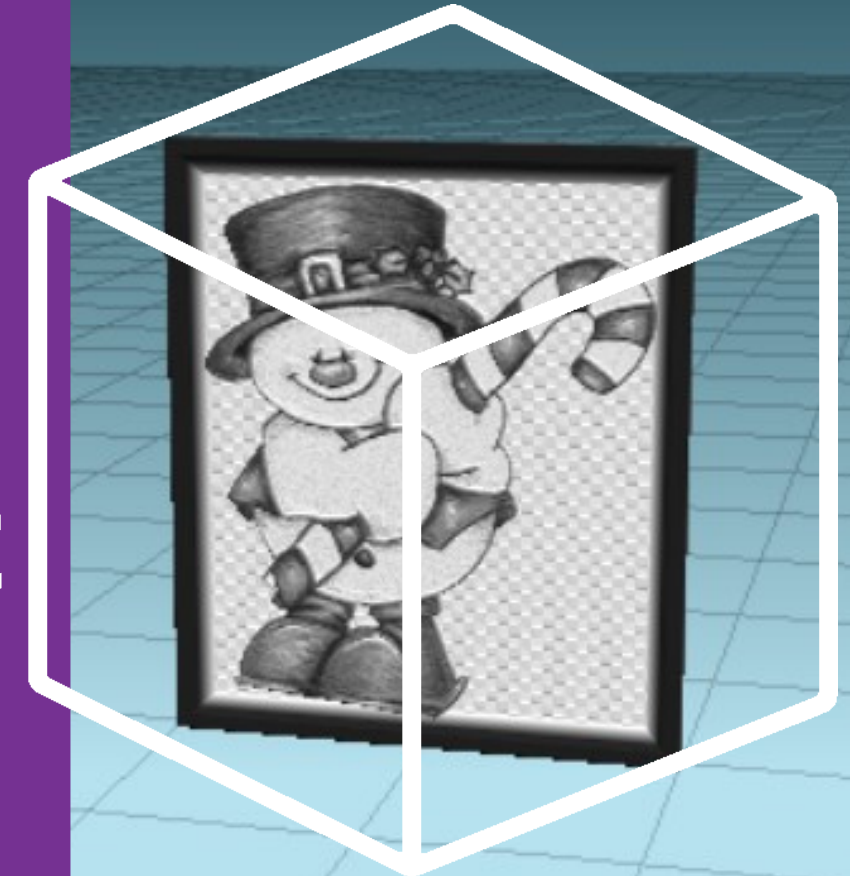
Mirror image

Placement horizontal 50 %

Model viewer



From here you can 3d view your model! You can also choose sizes, shapes, nightlight option, ornament option and many more!



Shape options



Shape Plane

Width 100 mm

Height 116.6 mm

Min Thick 0.8 mm

Max Thick 3.2 mm

Crop

Inside

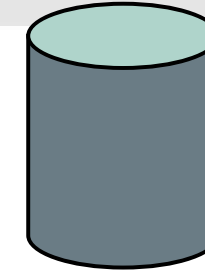
Shape options



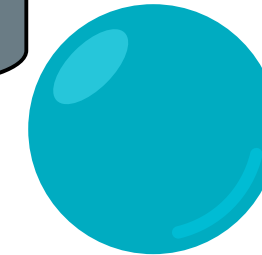
Plane



Cylinder



Sphere



Arc



Pumpkin



Revolve

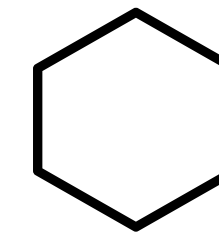
Circle

Christmas specials

Heart



Hexagon



Shape options

Frame options



Frame
Frame

Thickness 3 mm

Depth 4 mm

Angle 45 Deg

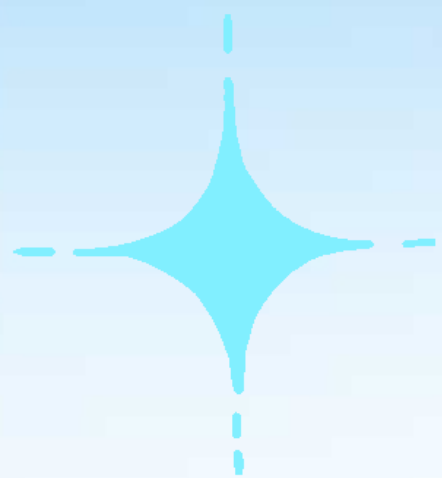
Advanced

Frame options

None

Frame

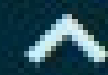
Border



Frame Options



Quality options



Estimated file size: 114 MB

mm per
pixel
Preview
Model



Attributes

Enable



lamp

Nightlight



QUALITY OPTIONS & ATTRIBUTES

Model options



Lighting

Back lighted



Light color



Light

5



95

%

intensity

Material

color



Auto



update

Image options



Positive



image

Flip image



Mirror



image

Placement



50

%

horizontal

Model Options & Image Options



**(IMAGE OPTIONS ARE SIMILAR TO
WHAT YOU DID IN EDIT MODE SO I DO
NOT USUALLY USE THEM MUCH)**



STORE

GUIDES

PROFILES

SIGN UP

FEEDBACK/BUG 

DONATE 

SUGGESTION 

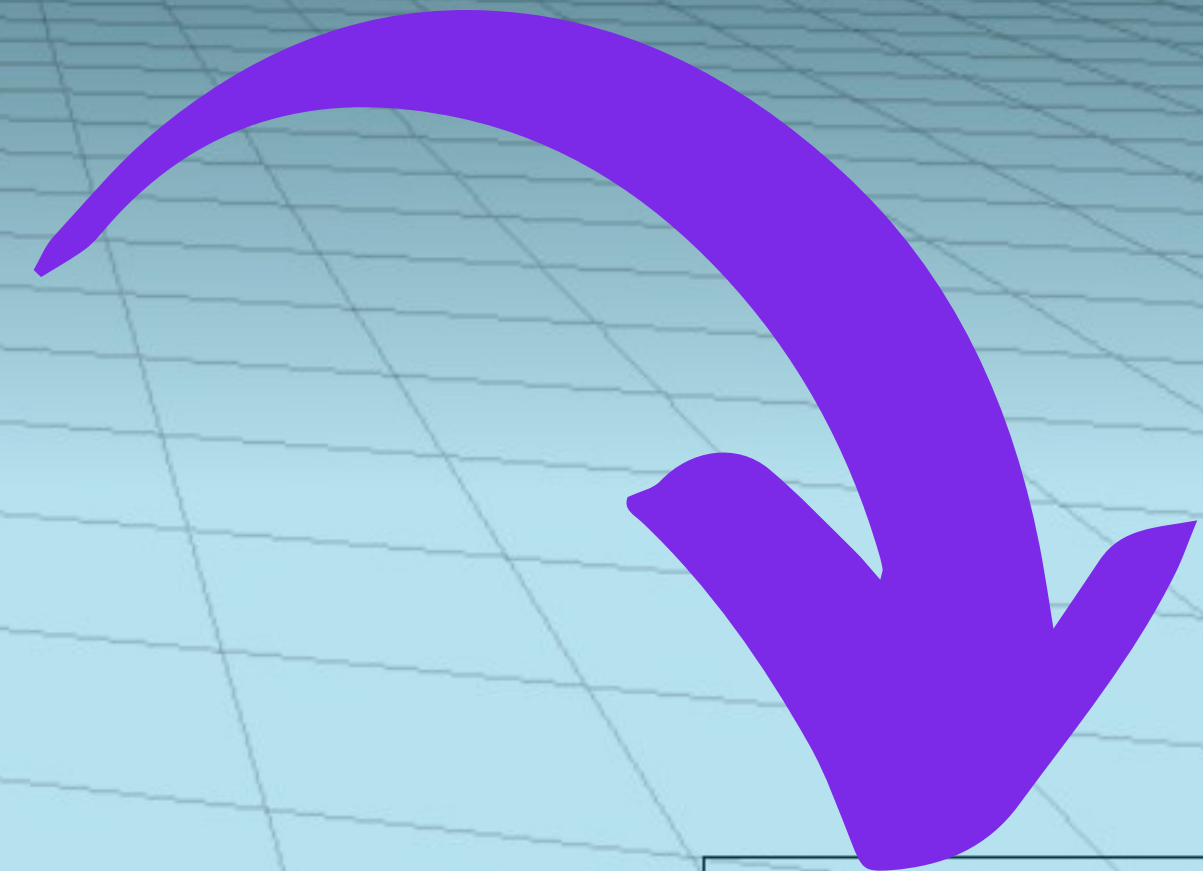


Model viewer



**FINALLY, CLICK
DOWNLOAD AT
THE BOTTOM
RIGHT!**

Download Now



DOWNLOAD 

Lithophane is ready!

Thank you for using ItsLitho Beta! Your input and/or opinions are important, feel free to give [feedback/suggestions/bug](#) reports, or ask us on our social media.

Your high quality Lithophane is being created (1 to 10 seconds).

The download button will automatically appear when the download

is ready. You have the ability to download the lithophane and

attributes separately or combined. Need more inspiration or help?

Check out our [guides](#)

Low on filament? Get the best results with:

- [eSUN cool white PLA \(1kg, 1.75mm\)](#)
- [Hatchbox white PLA \(1kg, 1.75mm\)](#)
- [Over](#) (1.75mm)

Do you like our tool? Spread the word on socials!



Download:

LITHOPHANE + ATTRIBUTE

LITHOPHANE

ATTRIBUTES

COLOR LITHOPHANE

DONATE

**ALWAYS
click
lithophane
+
attribute!!!**

STOP

**From here take
your download into
Cura and start
printing!**

CONGRAT S

**YOU FINISHED THE LITHOPHANE WORKSHOP! NOW
PLAY AROUND ON THE COMPUTERS AND TRY TO
MAKE ONE! JUST REMEMBER I AM HERE TO HELP!**